


# circuit diagram

# KBL 6800

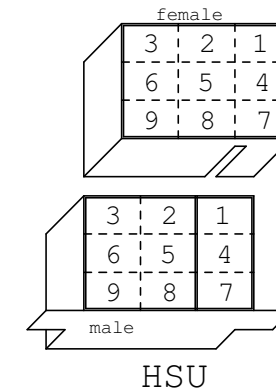
			Datum	17.03.06				MS 6800 IND USA	MS 6800_IND_220V_usa	= Änderungen vorbehalten
			Bearb.	R.Schmidt						+
			Gepr.							
Zust.	Änderung	Datum	Name	Norm	Urspr.	Ers.f.	Ers.d.		MS6800_IND_04/1105us	

## connectors

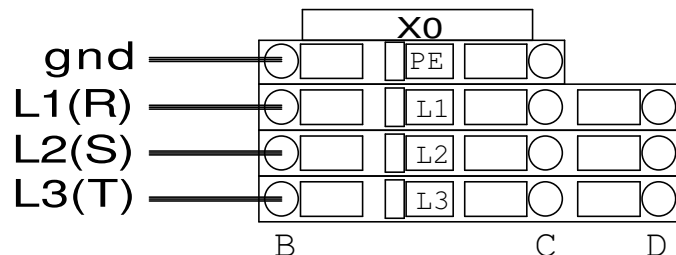
X0 control unit/ main terminal block  
 X1 control unit/ ballast, tubes  
 X2 control unit/ ballast, tubes  
 X3 control unit/ ballast, facial tanner  
 X4 control unit/ ballast, facial tanner  
 X5 control unit/ decorative light, error message  
 X6 control unit/ air ventilation  
 X7 control unit/ airconditioner  
 X8 control unit/ external timer  
 X9 heat return, servo motor  
 X9A heat return, thermostat  
 X9B n. c.  
 X10 exhaust fan  
 X11 air ventilation base  
 X12 airconditioner  
 X13 decorative light base, air ventilation feet  
 X14 condensate pump  
 X15 connector in the backplate  
 X17 air ventilation feet  
 X18 compressor unit  
 X18A compressor unit/liquid level sensor

XD1 connector canopy, tubes  
 XD2 connector canopy, tubes  
 XD3 connector can., tubes, body fan, thermal switch  
 XD4 connector canopy, facial tanner  
 XD5 connector canopy, air ventilation body  
 XD6 connector canopy, tubes  
 XD7 connector canopy, distribution  
 XD8 connector canopy, tubes, decorative light  
 XD10 connector canopy, fresh  
 XS1 connector back side, tubes  
 XS3 connector back side, distribution  
 XS1 connector back side, tubes  
 XL1 connector base, tubes  
 XL2 connector base, tubes  
 XL3 connector base, tubes  
 XL4 connector base, distribution

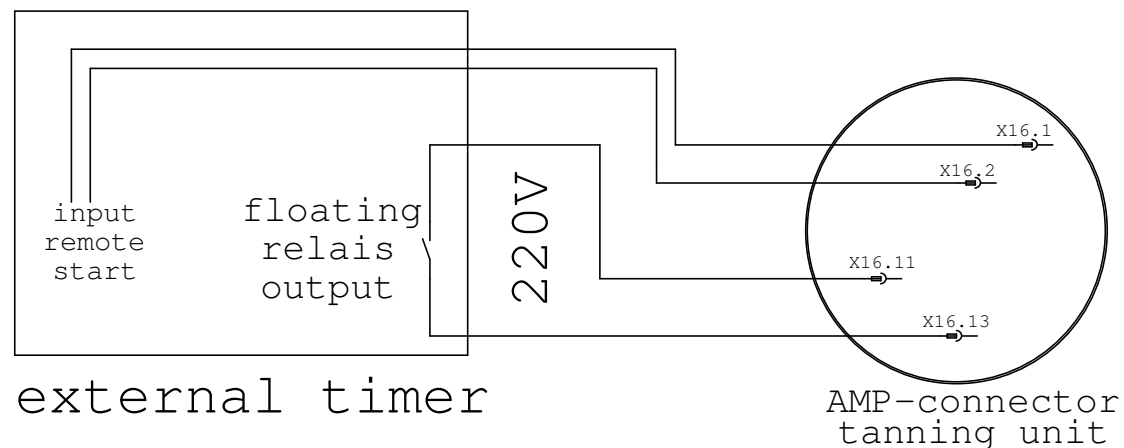
E1 main control board/ start, power supply  
 E2 main control board/ body fan  
 E3 main control board/ relais output  
 E4 main control board/ remote start  
 E5 main control board/ error messages  
 E6 n.c.  
 E7 music amplifier/ power supply  
 E10 relais board fresh/ power supply  
 E11 relais board fresh/ relais output  
 E13 relais board fresh/ relais output  
 E15 LED transformer, power supply  
 E16 LED transformer output  
 E17 LED power supply  
 E19 speed control, exhaust air fan  
 E20 Interface/Audio Switch, power supply

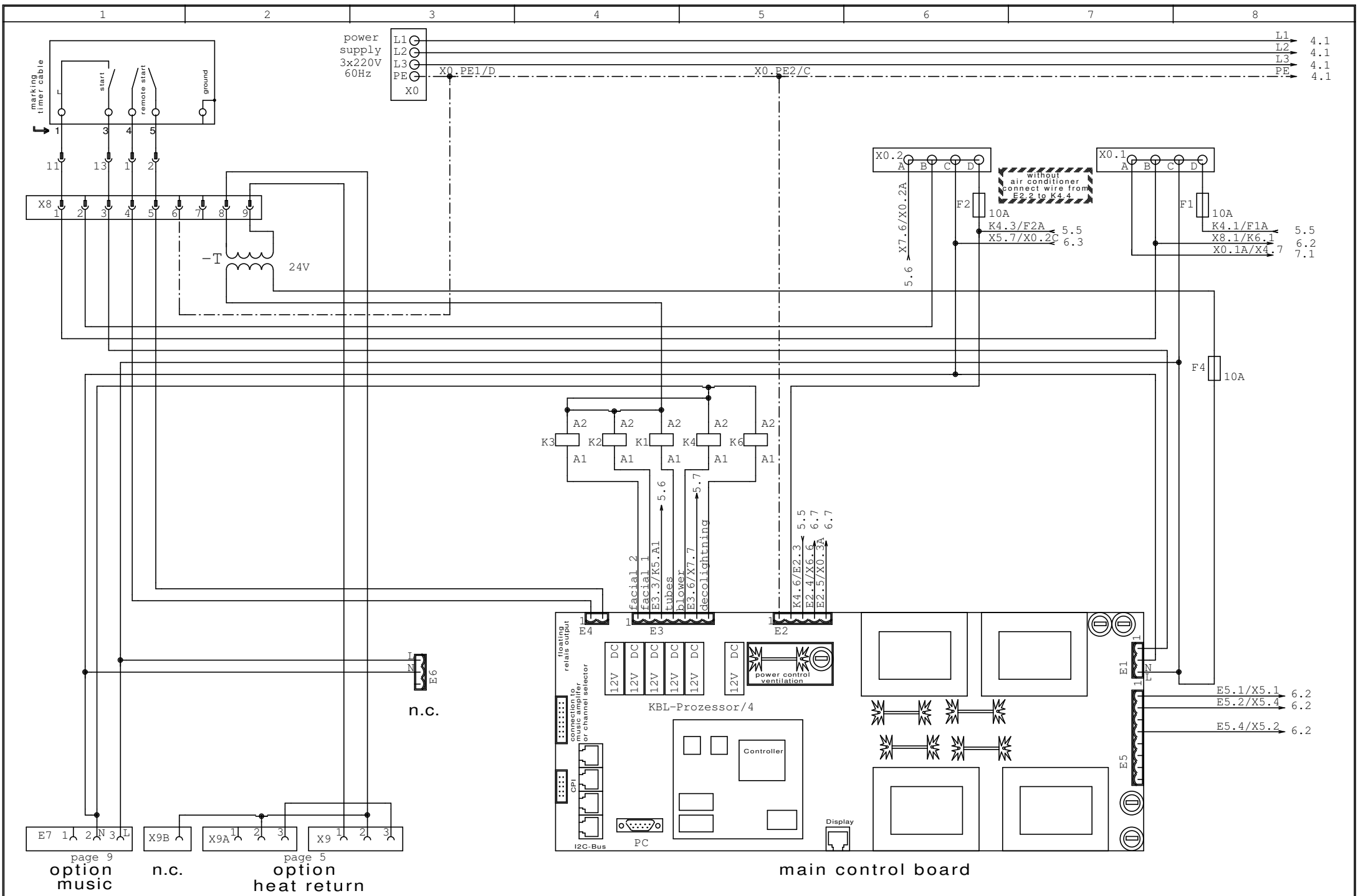


connection of the main power supply  
 3 x 220V / 3 ~ / 60Hz (AWG 6)



connection to external timer  
 with an floating relais output





page 9  
option  
music

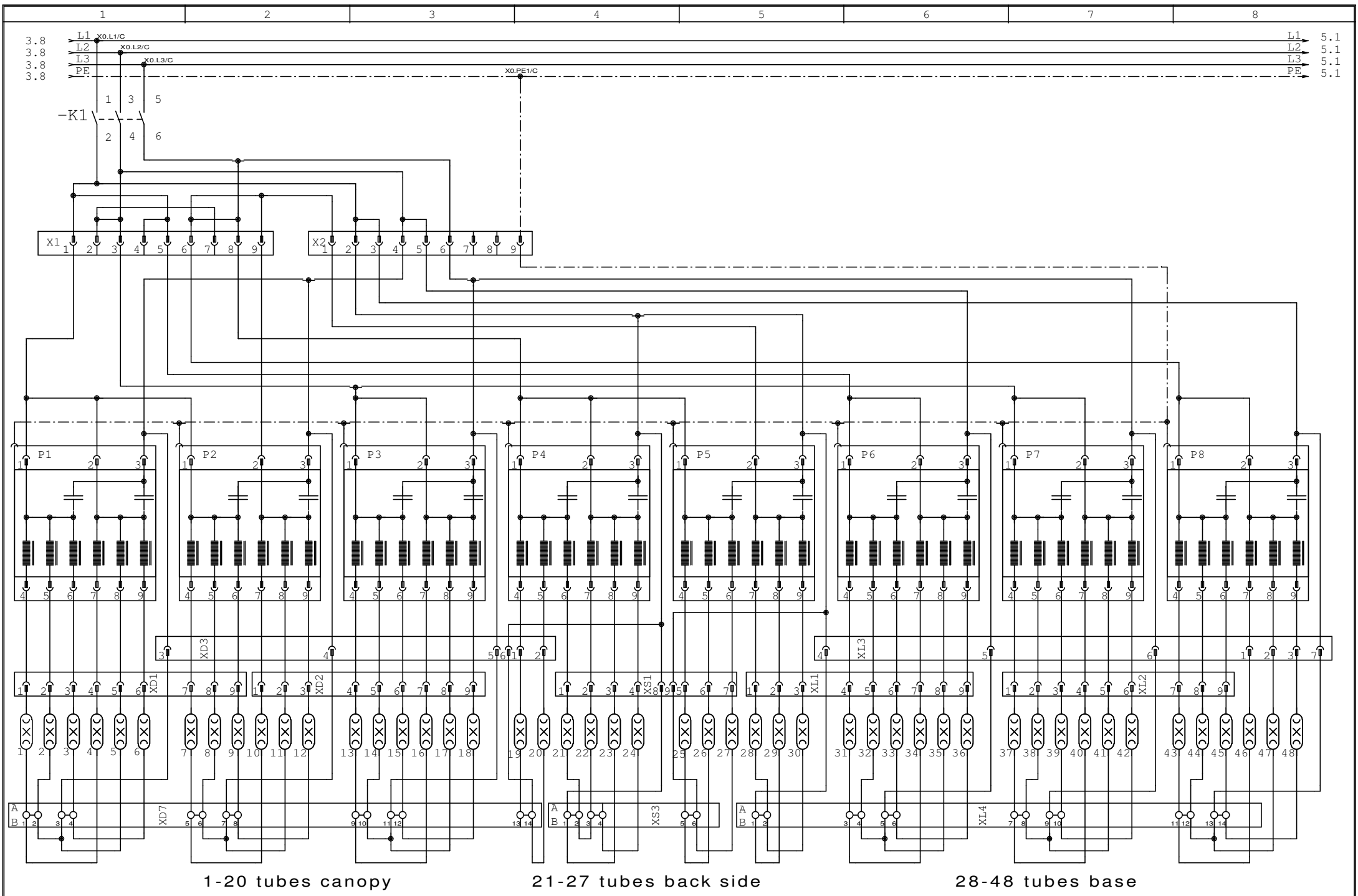
n.c.

page 5  
option  
heat return

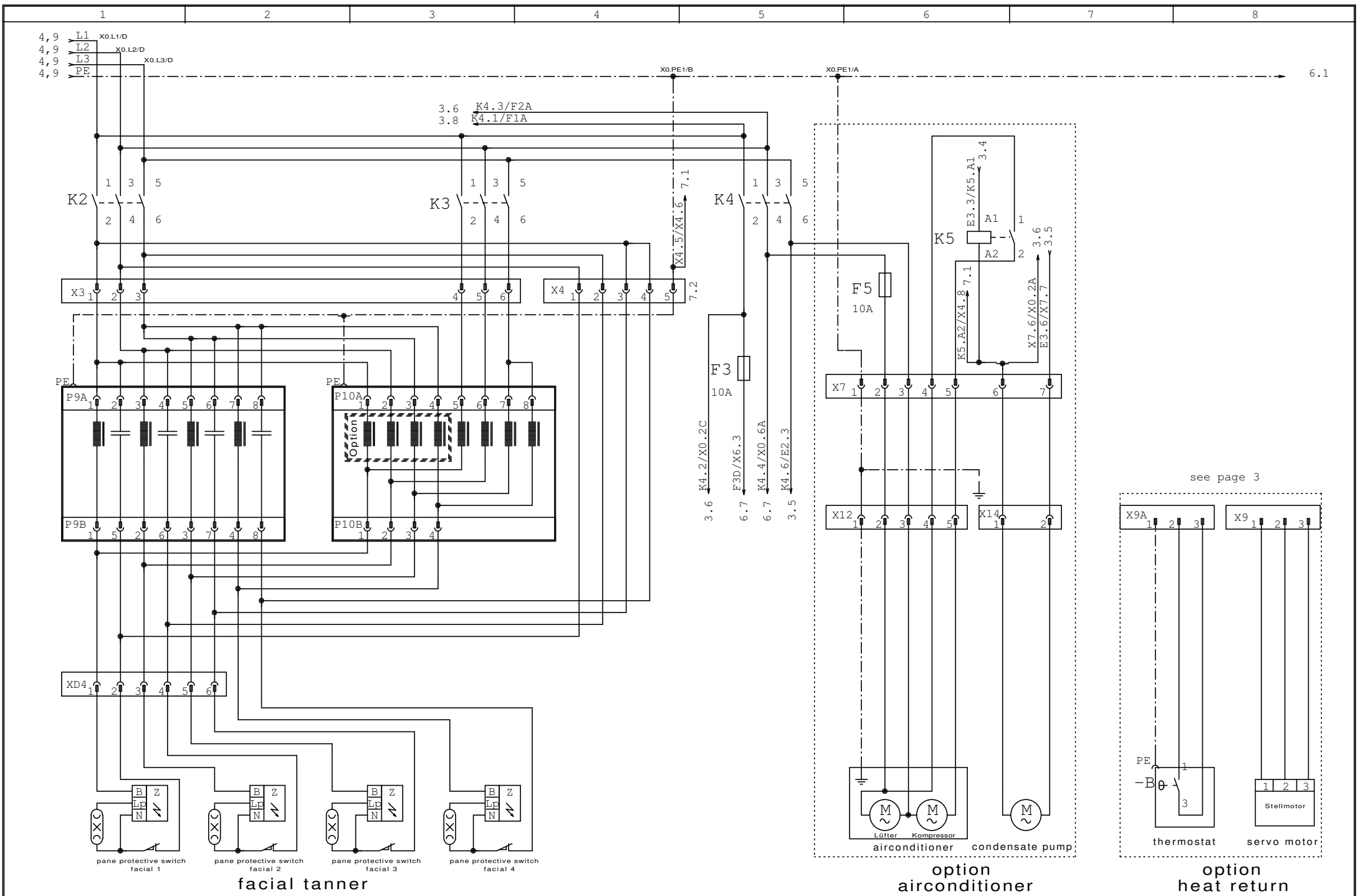
main control board

				Datum	17.03.06	KBL- Solarien		MS 6800 IND USA	MS6800_IND_04/1105us	page 3
			Bearb.	R.Schmidt						
			Gepr.							
Zust.	Änderung	Datum	Name	Norm	Urspr.	Ers.f.	Ers.d.			

= Änderungen vorbehalten  
+



					Datum 17.03.06		 <b>KBI</b> SOLAR INVERTER COMPANY		MS 6800 IND USA		= Änderungen vorbehalten	
					Bearb. R.Schmidt				MS 6800_IND_220V_usa		+	
					Gepr.				MS6800_IND_04/1105us		page 4	
Zust.	Änderung	Datum	Name	Norm	Urspr.	Ers.f.	Ers.d.					



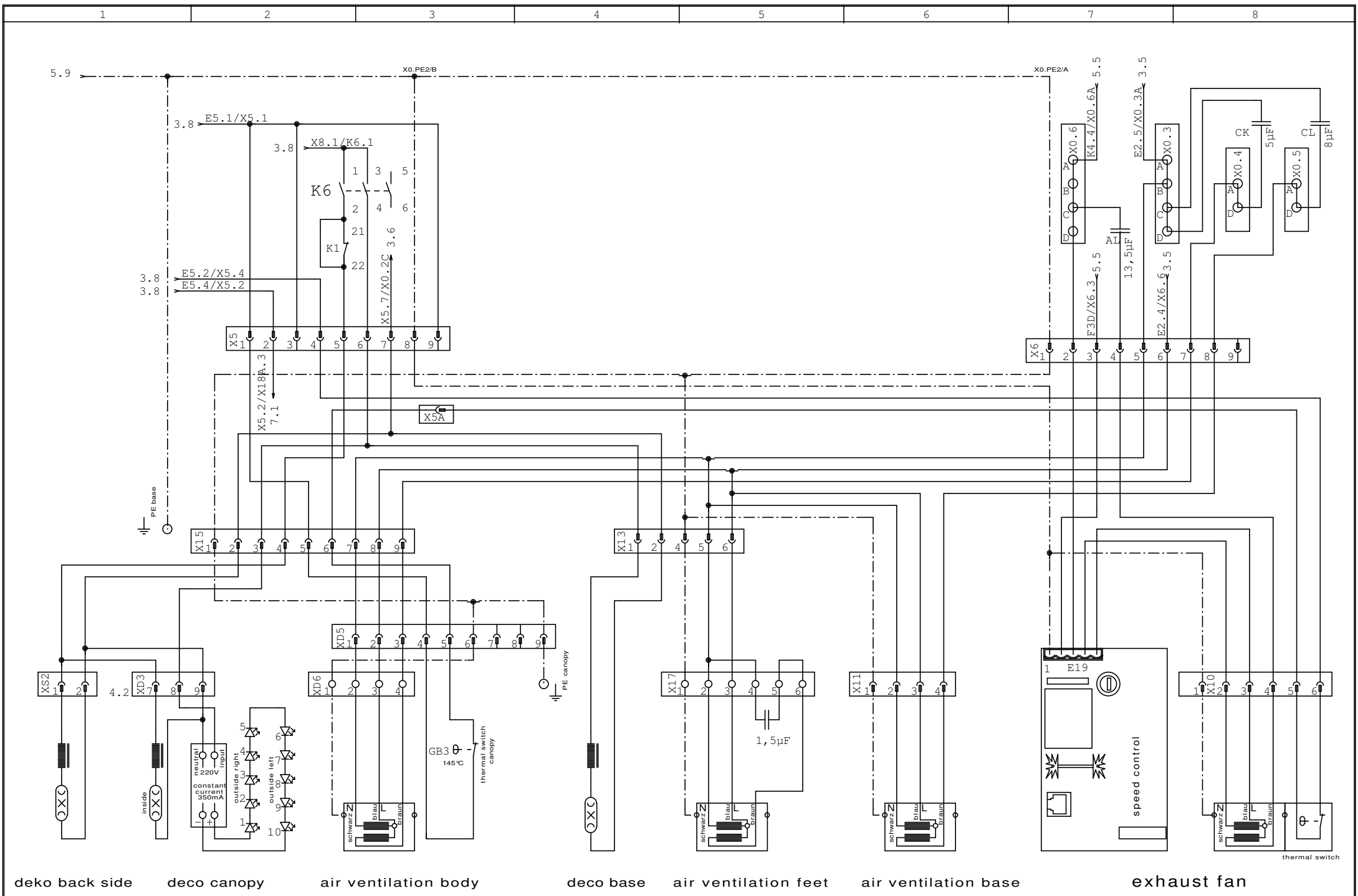
6.1

see page 3

option  
airconditioner

option  
heat return

					Datum	17.03.06	 <b>KBI</b> <small>SOLAR COMPANY</small>	MS 6800 IND USA		= Änderungen vorbehalten	
					Bearb.	R.Schmidt		MS 6800_IND_220V_usa		+	
					Gepr.			MS6800_IND_04/1105us		page 5	
Zust.	Änderung	Datum	Name	Norm	Urspr.	Ers.f.	Ers.d.				



deko back side

deco canopy

air ventilation body

deco base

air ventilation feet

air ventilation base

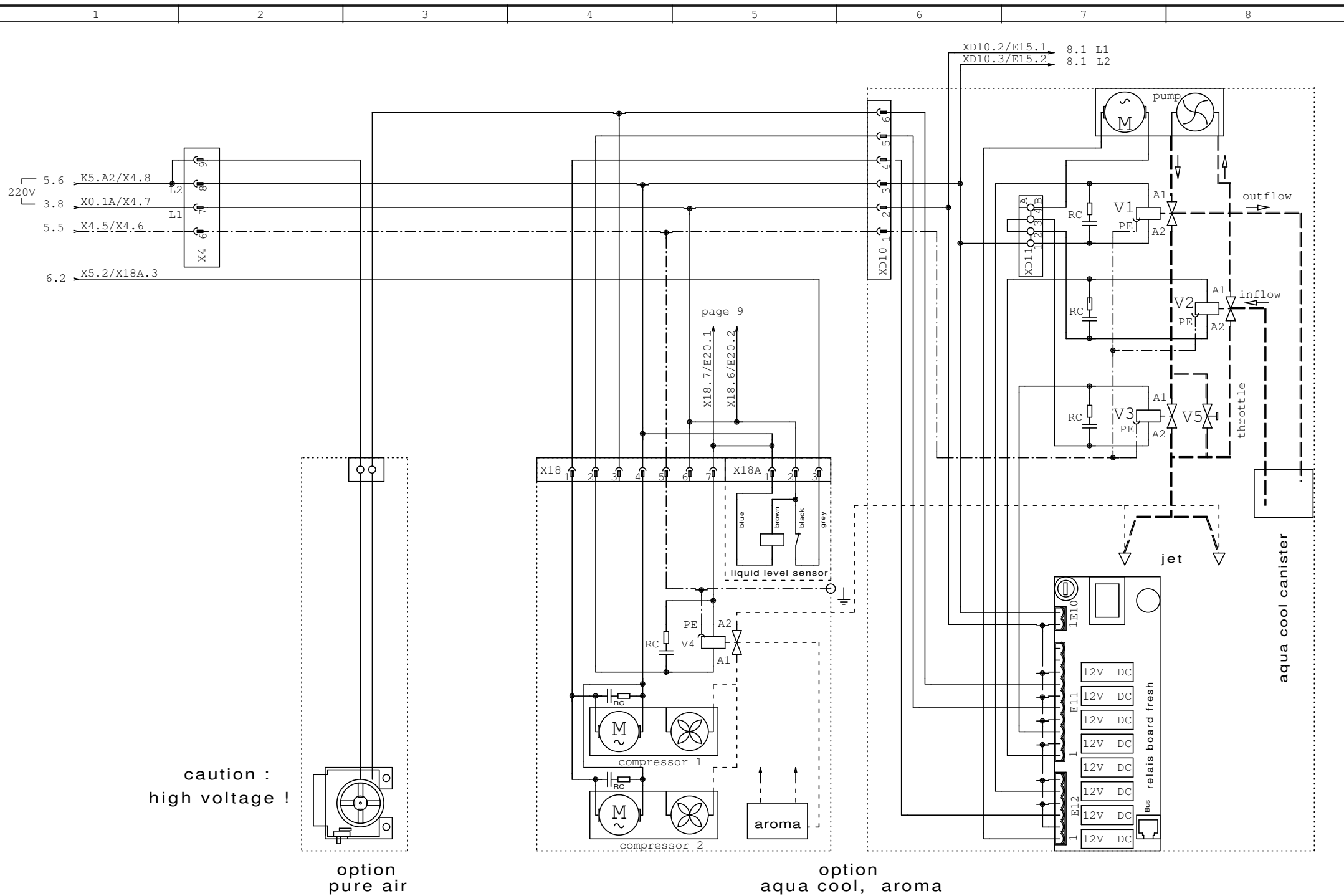
exhaust fan

Datum	17.03.06
Bearb.	R.Schmidt
Gepr.	
Zust.	Änderung
Datum	
Name	
Norm	

KBL- Solarien		 <small>KONIGSBERG COMPANY</small>
Urspr.	Ers.f.	
		Ers.d.

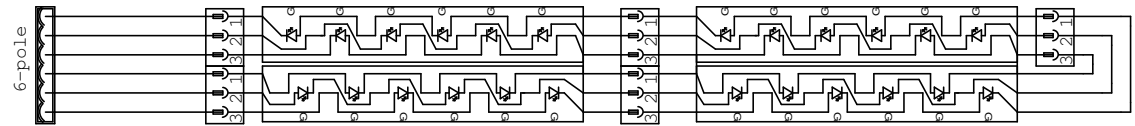
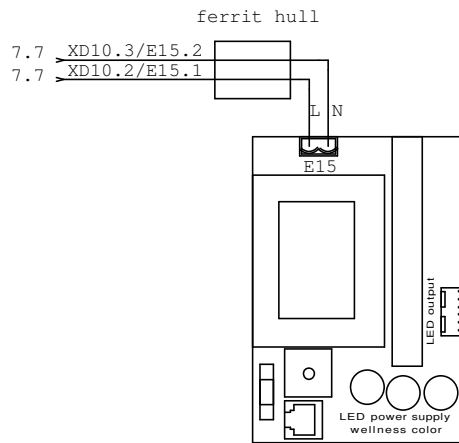
MS 6800 IND USA	
-----------------	--

MS 6800_IND_220V_usa		= Änderungen vorbehalten
MS6800_IND_04/1105us		+ page 6

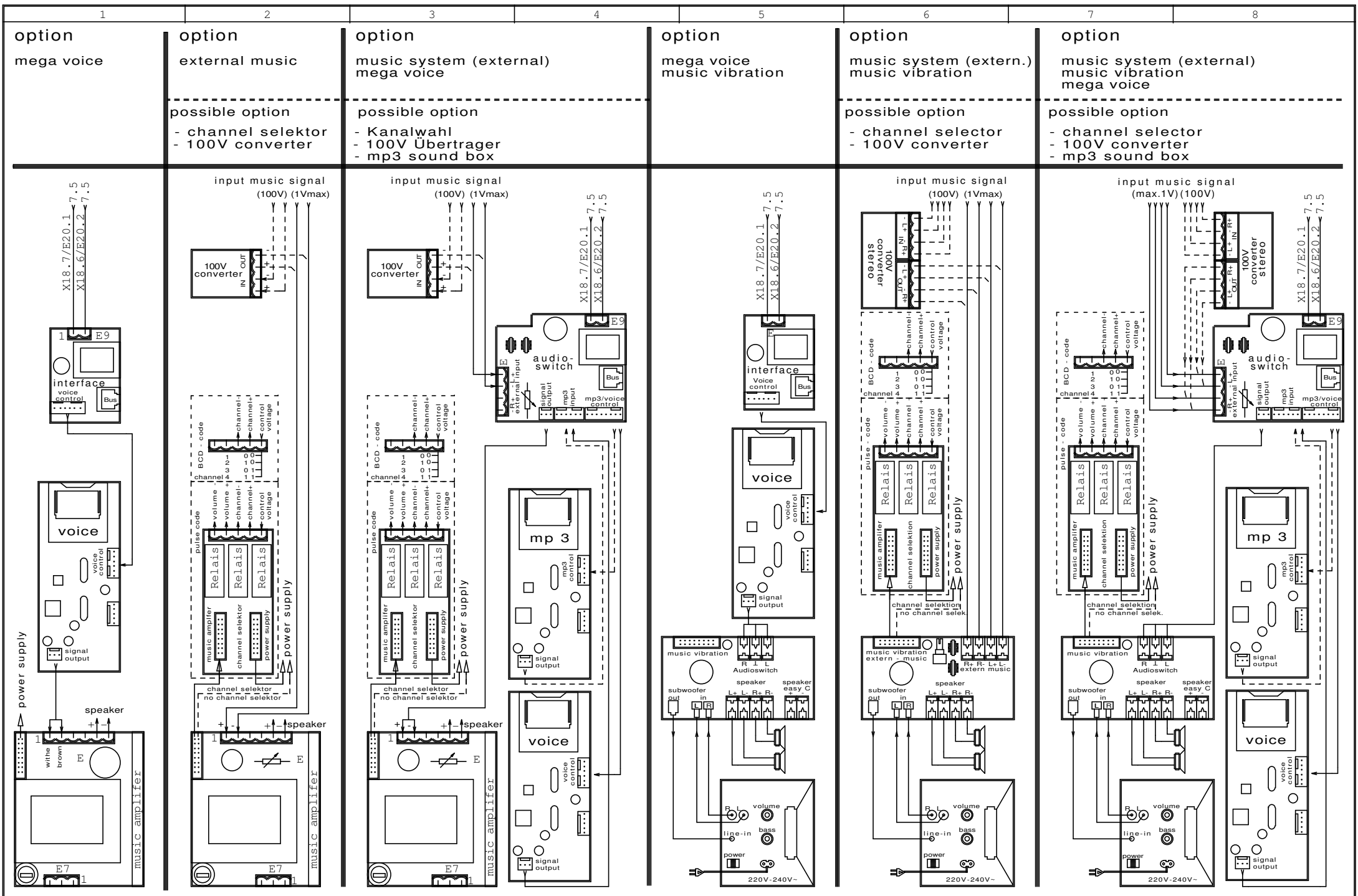


					Datum	17.03.06	KBL- Solarien			MS 6800 IND USA		MS 6800_IND_220V_usa		= technical changes reserved	
					Bearb.	R.Schmidt				MS 6800 IND USA		MS 6800_IND_220V_usa		+	
					Gepr.					MS 6800 IND USA		MS 6800_IND_220V_usa		page 7	
Zust.	Änderung	Datum	Name	Norm	Urspr.	Ers.f.	Ers.d.	MS 6800 IND USA		MS6800_IND_04/1105us					

option wellness color



				Datum	17.03.06	KBL- Solarien		MS 6800 IND USA	MS 6800_IND_220V_usa		= technical changes reserved	
				Bearb.	R.Schmidt						+	
				Gepr.							page 8	
Zust.	Änderung	Datum	Name	Norm		Urspr.	Ers.f.	Ers.d.	MS6800_IND_04/1105us			

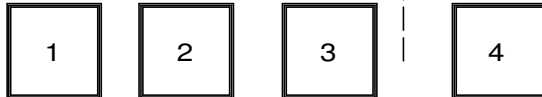
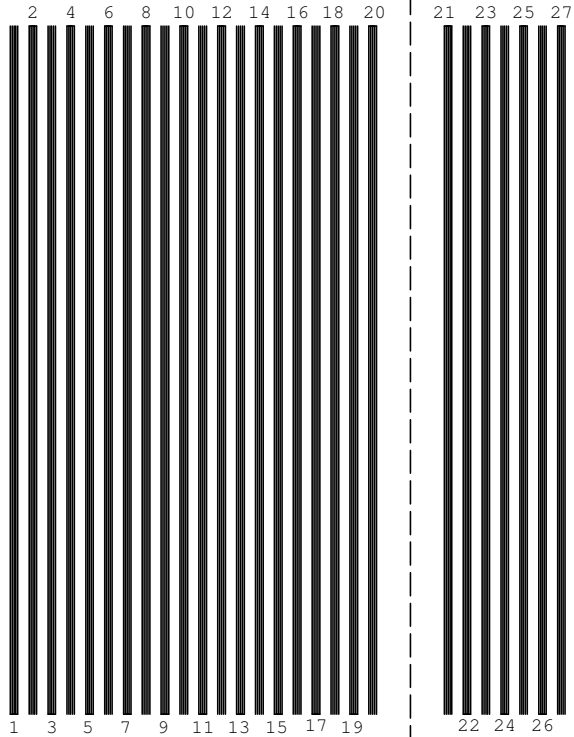
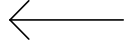


Datum		17.03.06			MS 6800 IND USA		= technical changes reserved		
Bearb.		R.Schmidt			MS 6800 IND USA		+		
Gepr.									MS6800_IND_04/1105us
Zust.	Änderung	Datum	Name	Norm	Urspr.	Ers.f.	Ers.d.		

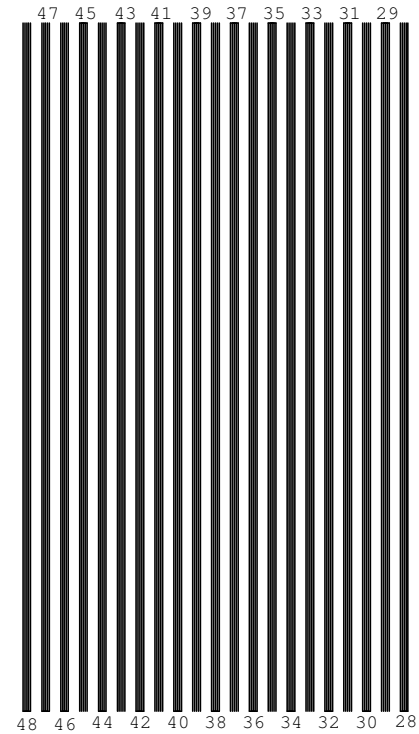
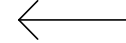
top  
(view from above)

base  
(view from above)

front



front



			Datum	17.03.06	KBL- Solarien		MS 6800 IND USA	MS6800_IND_04/1105us	=	Änderungen vorbehalten
		Bearb.	R.Schmidt	+						
		Gepr.							page 10	
Zust.	Änderung	Datum	Name	Norm	Urspr.	Ers.f.	Ers.d.			