

circuit diagram

KBL 7900

KBL Convertible

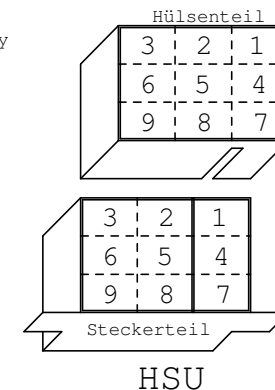
			Datum	25.09.06	KBL- Solarien		MS 7900 IND_USA	MS 7900_IND_220V_usa	= Änderungen vorbehalten	
			Bearb.	R.Schmidt						+
			Gepr.							Blatt 1
Zust.	Änderung	Datum	Name	Norm	Urspr.	Ers.f.	Ers.d.	MS7900_IND_05/0906us	von 11Bl.	

connectors

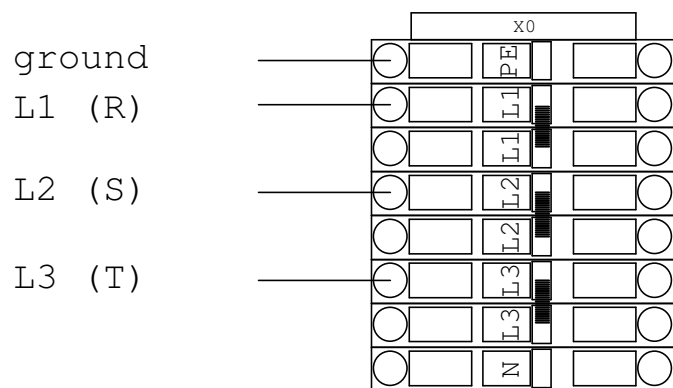
X0 control unit/ main terminal block
 X1 control unit/ ballast, tubes
 X2 control unit/ ballast, tubes/ shoulder tanner
 X3 control unit/ ballast, facial tanner
 X4 control unit/ ballast, facial tanner
 X5 control unit/ exhaust fan
 X6 control unit/external timer, decorative light
 X6A control unit/deco light canopy, -back side
 X7 control unit/ airconditioner
 X8 exhaust fan
 X9 air ventilation
 X10 air ventilation body
 X11 airconditioner
 X12 condensate pump
 X13 heat return, servo motor
 X13A heat return, thermostat
 X15 external timer
 X14 decorative light insert front
 X14A tube insert front
 X18A compressor unit

XD1 connector canopy, tubes
 XD2 connector canopy, tubes
 XD3 connector canopy, tubes
 XD4 connector canopy, tubes/decorative light
 XD5 connector canopy, tubes distribution
 XD6 connector canopy,tubes deco inside
 XD7 connector canopy,facial tanner/thermal switch
 XS1 connector back side, tubes
 XS2 connector back side, tubes distribution
 XS3 connector back side, tube dekorative light
 XL1 connector base, tubes
 XL2 connector base, tubes
 XL3 connector base, tubes
 XL4 connector base, tubes distribution
 X31 aqua cool, aroma
 X32 shoulder tanner
 X33 pure air

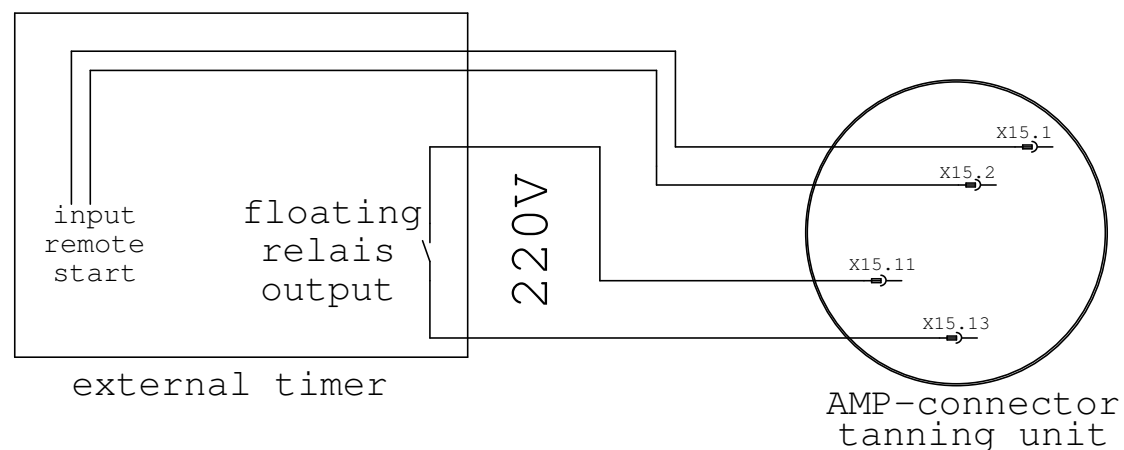
E1 main control board/ start,power supply
 E2 main control board/ body fan
 E3 main control board/ relais output
 E4 main control board/ remote start
 E5 main control board/ error messages
 E6 n.c.
 E9 music amplifier/ power supply
 E10 relais board fresh/ power supply
 E11 relais board fresh/ relais output
 E12 relais board fresh/ relais output
 E15 LED transformer, power supply
 E16 LED transformer output
 E17 LED power supply
 E19 speed control, exhaust air fan
 E20 Interface/Audio Switch ,power supply



connection of the main power supply
 3 x 220V / 60Hz ~ 4 x AWG 6



connection to external timer
 with an floating relais output



Datum 25.09.06

Bearb. R.Schmidt

Gepr.

KBL- Solarien



MS 7900 IND_USA

MS 7900_IND_220V_usa

= Änderungen vorbehalten

+

Zust. Änderung Datum Name Norm

Urspr.

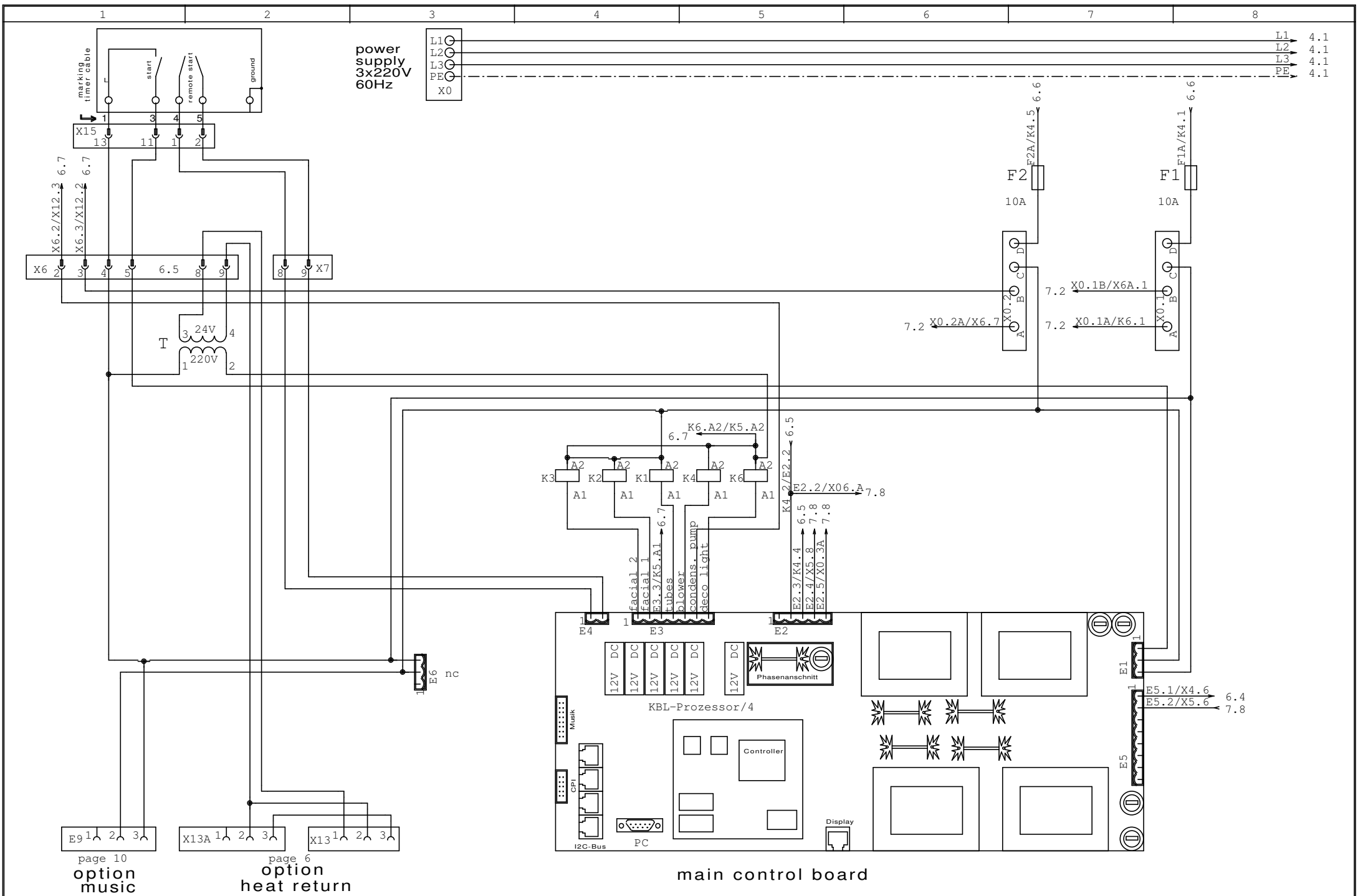
Ers.f.

Ers.d.

MS7900_IND_05/0906us

Blatt 2

von 11Bl.



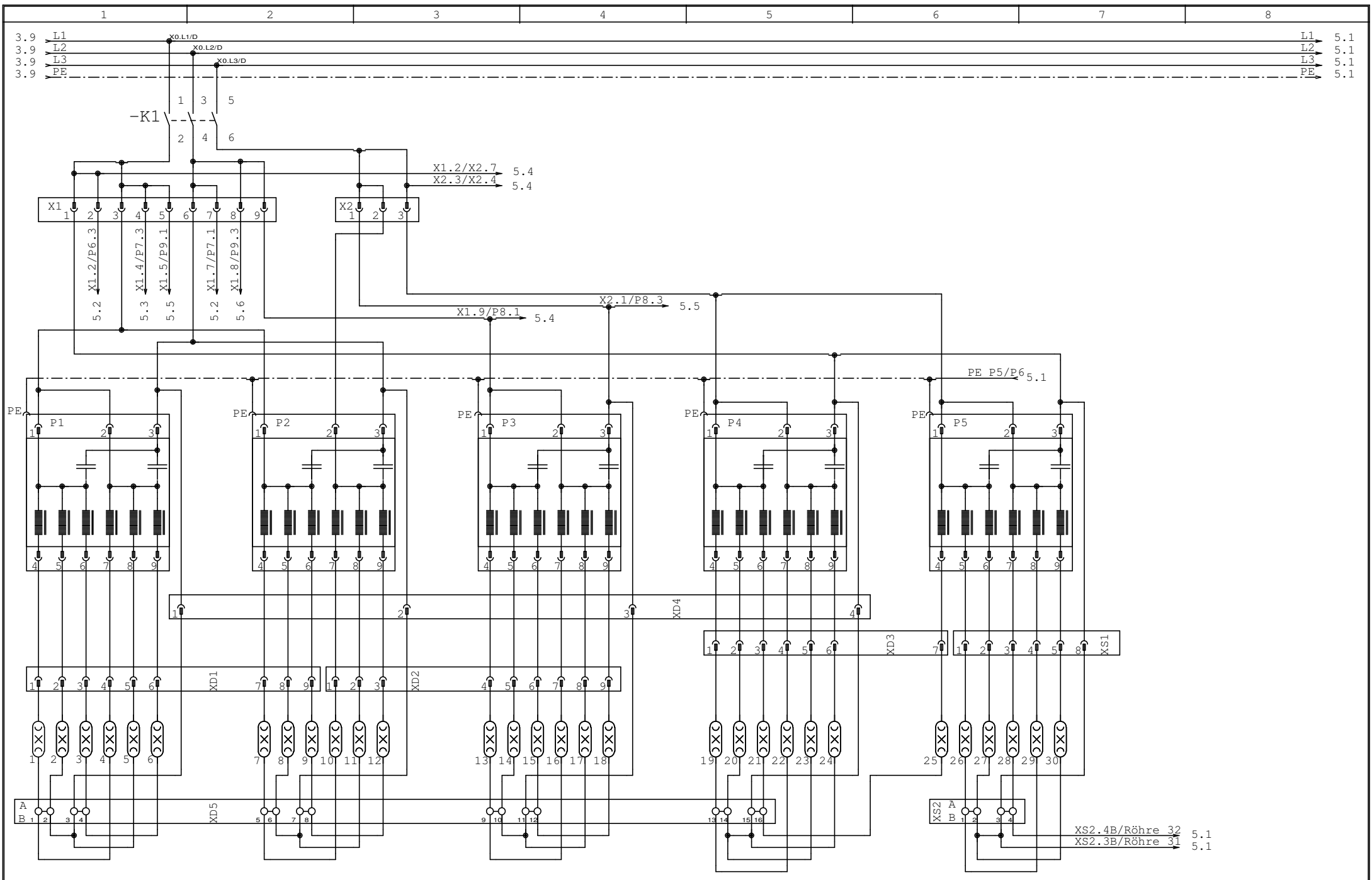
page 10
option
music

page 6
option
heat return

main control board

			Datum	25.09.06		MS 7900 IND_USA	MS7900_IND_05/0906us	Blatt 3 von 11Bl.			
		Bearb.	R.Schmidt	KBL- Solarien					MS 7900 IND_USA	MS7900_IND_05/0906us	Blatt 3 von 11Bl.
		Gepr.									
Zust.	Änderung	Datum	Name	Norm	Urspr.	Ers.f.	Ers.d.				

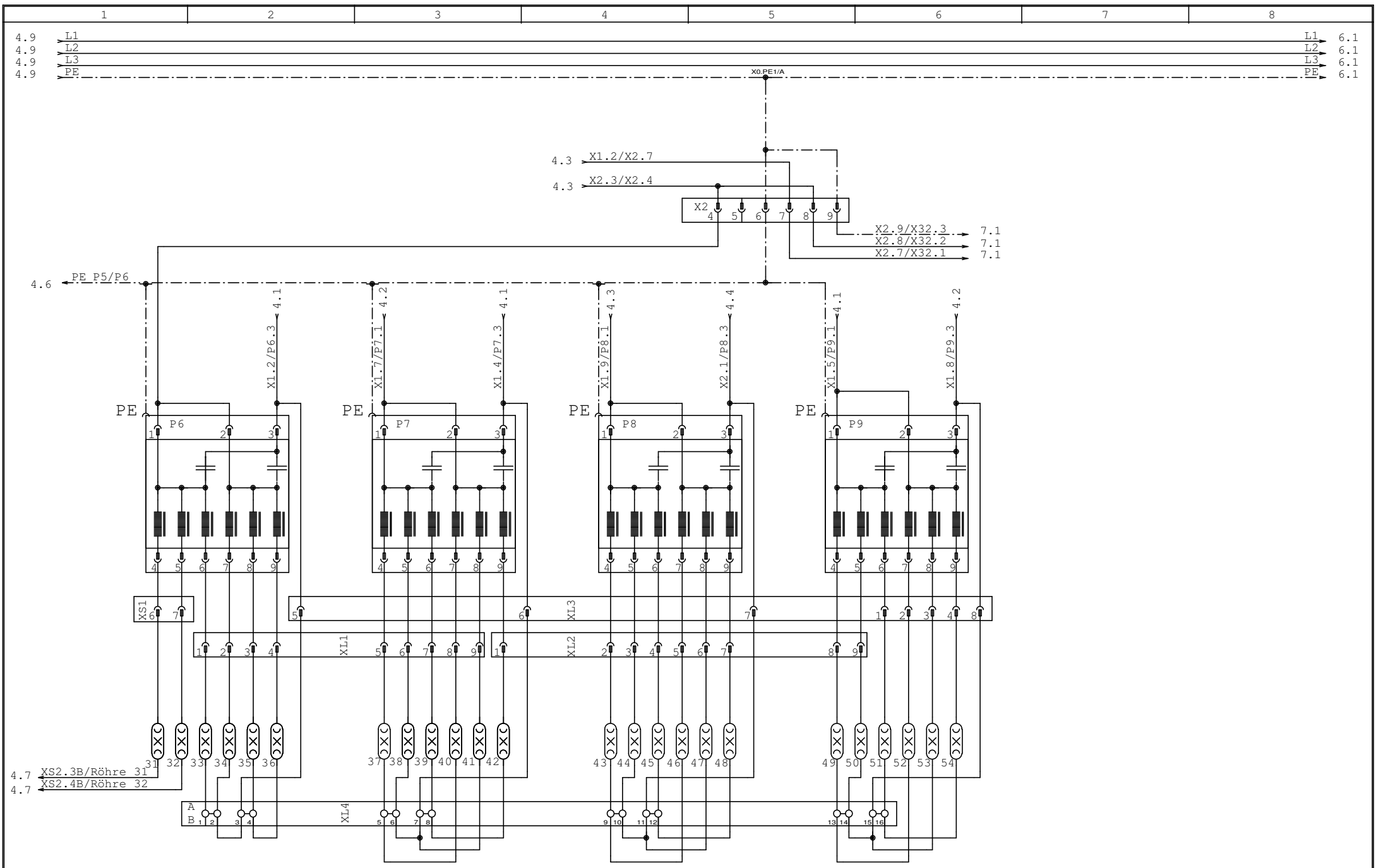
= Änderungen vorbehalten
+



Röhren Decke 1 - 25

Röhren Seite 26 - 30

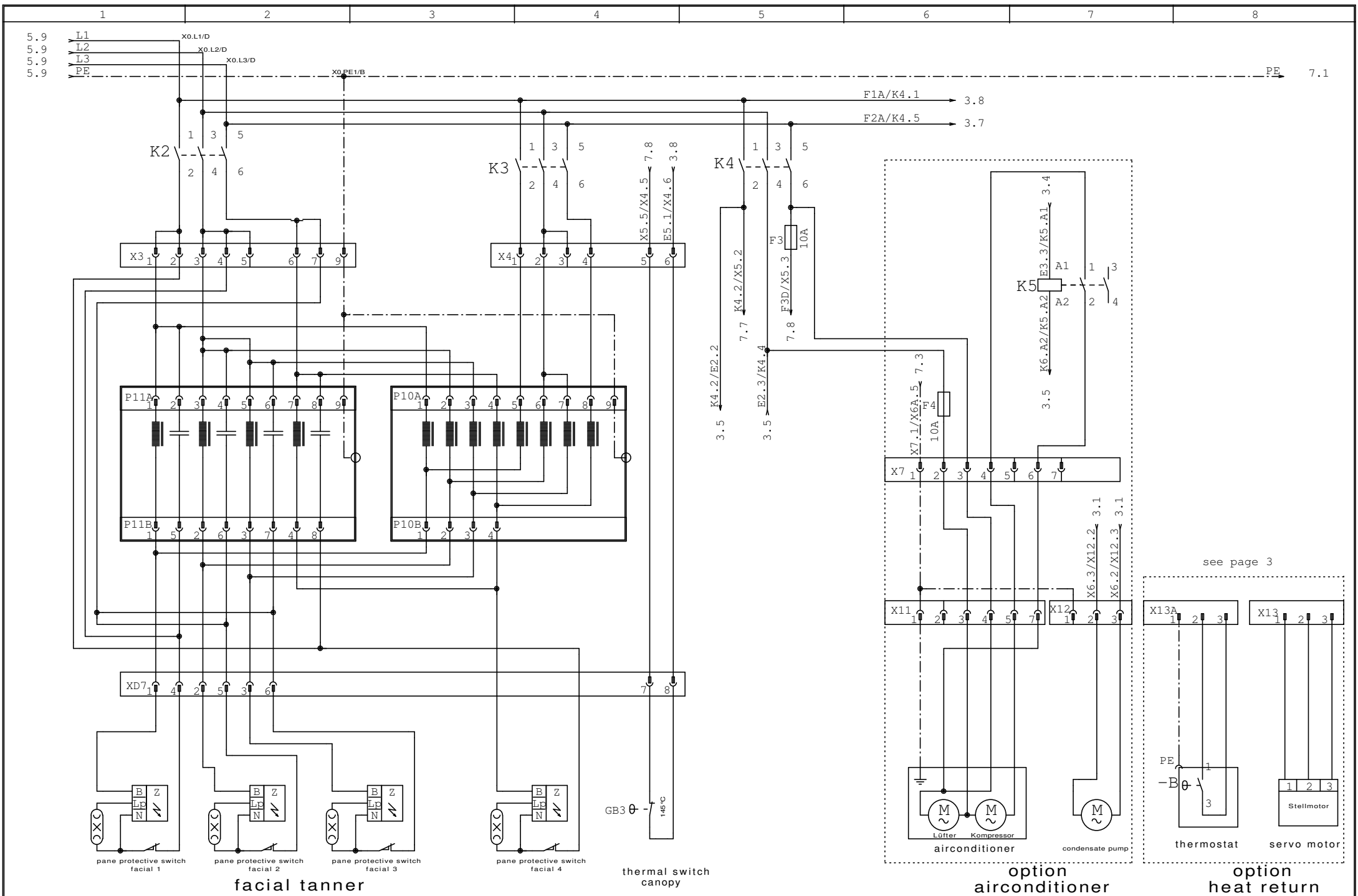
				Datum	25.09.06	 KBI <small>KUBISHI COMPANY</small>	MS 7900 IND_USA		= Änderungen vorbehalten
				Bearb.	R.Schmidt		KBL- Solarien		+
				Gepr.					
Zust.	Änderung	Datum	Name	Norm	Urspr.	Ers.f.	Ers.d.	MS7900_IND_05/0906us	Blatt 4
								von 11Bl.	



Röhren Seite 31/32

Röhren Liege 33 - 54

		Datum	25.09.06		 KBI <small>SOLAR SYSTEMS COMPANY</small>	MS 7900 IND_USA		= Änderungen vorbehalten	
		Bearb.	R.Schmidt					+	
		Gepr.							
Zust.	Änderung	Datum	Name	Norm	Urspr.	Ers.f.	Ers.d.	MS7900_IND_05/0906us	Blatt 5 von 11Bl.



Datum	25.09.06
Bearb.	R.Schmidt
Gepr.	
Zust.	Änderung
Datum	
Name	
Norm	

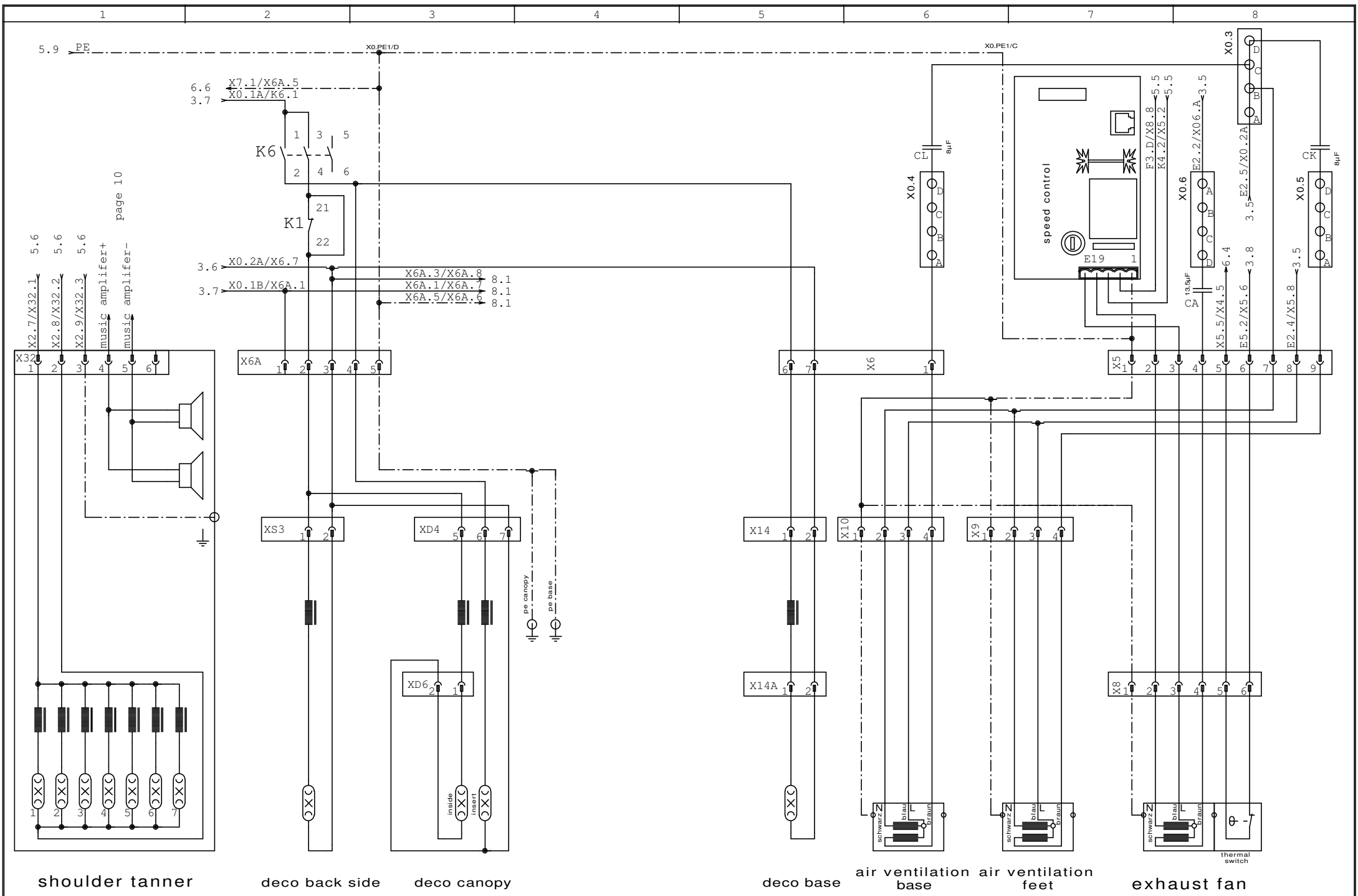
KBL- Solarien

KBI
SOLARIZATION COMPANY

Urspr.	Ers.f.	Ers.d.
--------	--------	--------

MS 7900 IND_USA

MS 7900_IND_220V_usa	= Änderungen vorbehalten
MS7900_IND_05/0906us	+ Blatt 6
	von 11Bl.



shoulder tanner

deco back side


deco canopy

deco base

air ventilation base
air ventilation feet

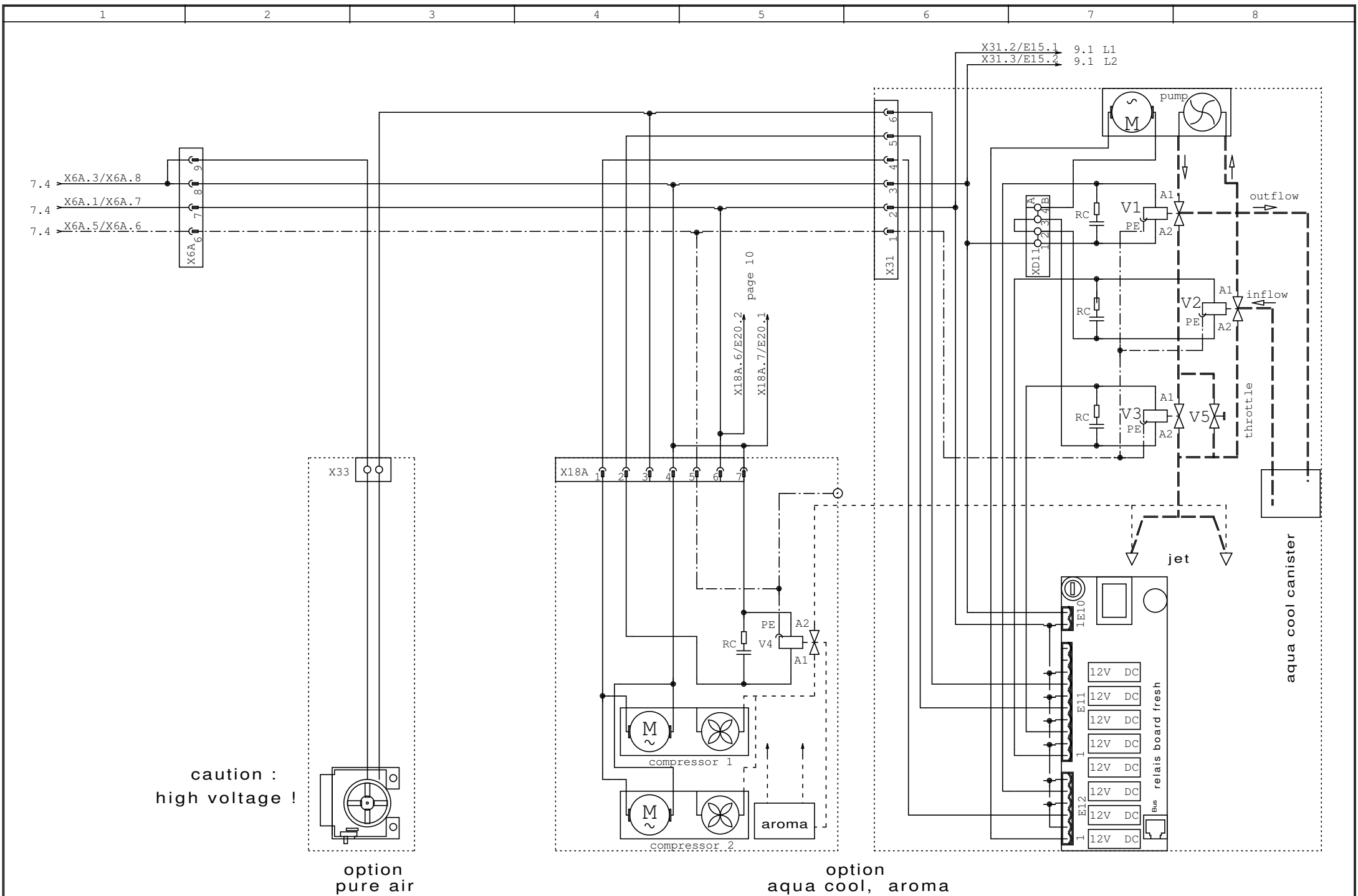
exhaust fan

Datum	25.09.06
Bearb.	R.Schmidt
Gepr.	
Zust.	Änderung
Datum	
Name	
Norm	

KBL- Solarien		 <small>KORROSION COMPANY</small>
Urspr.	Ers.f.	
		Ers.d.

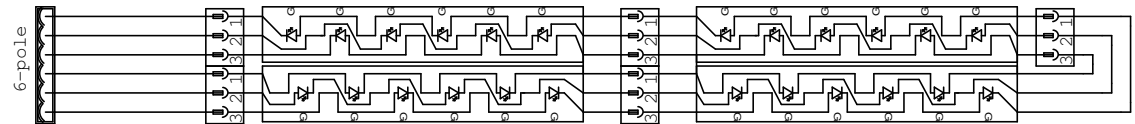
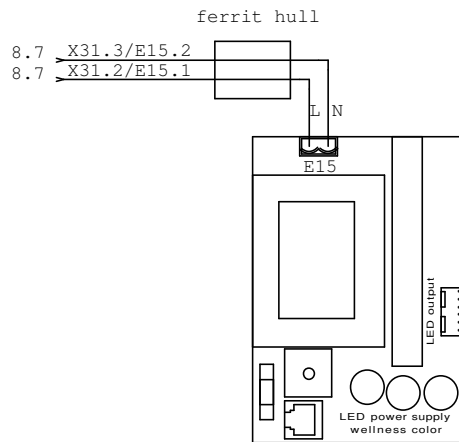
MS 7900 IND_USA	
-----------------	--

MS 7900_IND_220V_usa		= Änderungen vorbehalten
MS7900_IND_05/0906us		+ Blatt 7
		von 11Bl.

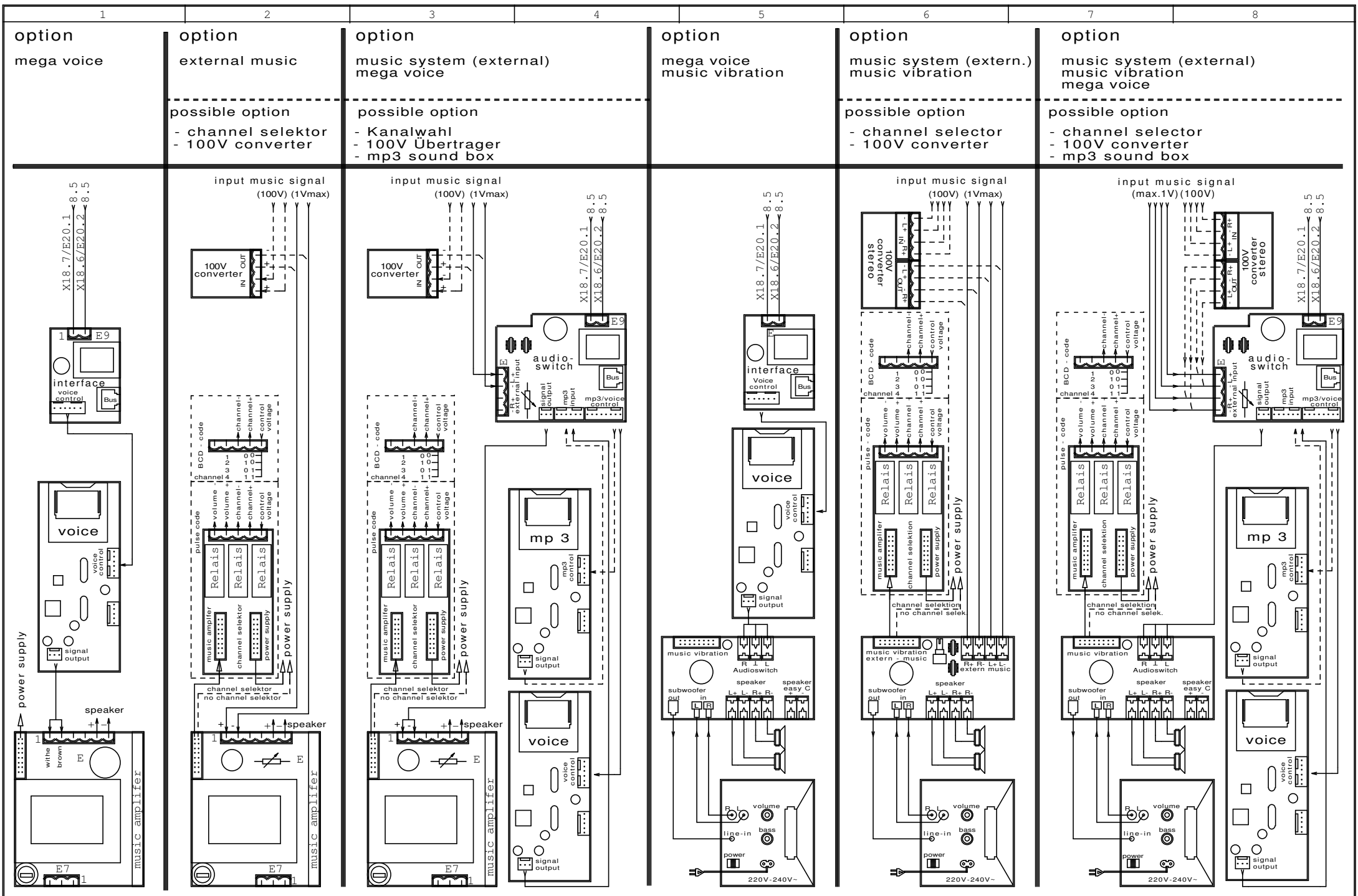


				Datum	25.09.06	KBL- Solarien			MS 7900 IND_USA		= Änderungen vorbehalten	
				Bearb.	R.Schmidt				MS 7900_IND_220V_usa		+	
				Gepr.					MS7900_IND_05/0906us		Blatt 8	
Zust.	Änderung	Datum	Name	Norm	Urspr.	Ers.f.	Ers.d.	MS7900_IND_05/0906us			von 11Bl.	

option wellness color



				Datum	25.09.06	KBL- Solarien		MS 7900 IND_USA	MS 7900_IND_220V_usa		= Änderungen vorbehalten		
			Bearb.	R.Schmidt									
			Gepr.										
Zust.	Änderung	Datum	Name	Norm		Urspr.	Ers.f.	Ers.d.		MS7900_IND_05/0906us	Blatt 9 von 11 Bl.		



Datum	25.09.06
Bearb.	R.Schmidt
Gepr.	
Zust.	Änderung
Datum	
Name	
Norm	

Urspr.	Ers.f.	Ers.d.
--------	--------	--------



KBL- Solarlen
MS 7900 IND_USA

MS 7900_IND_220V_usa	= Änderungen vorbehalten
MS7900_IND_05/0906us	+ Blatt 10 von 11Bl.

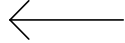
top
(view of above)

base
(view of above)

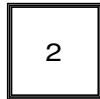
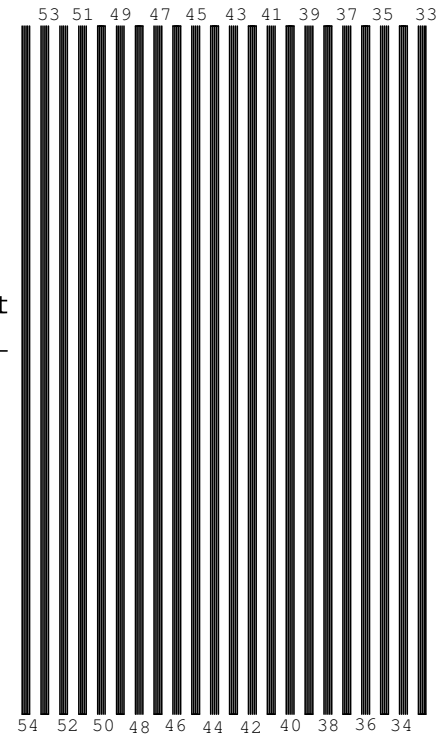
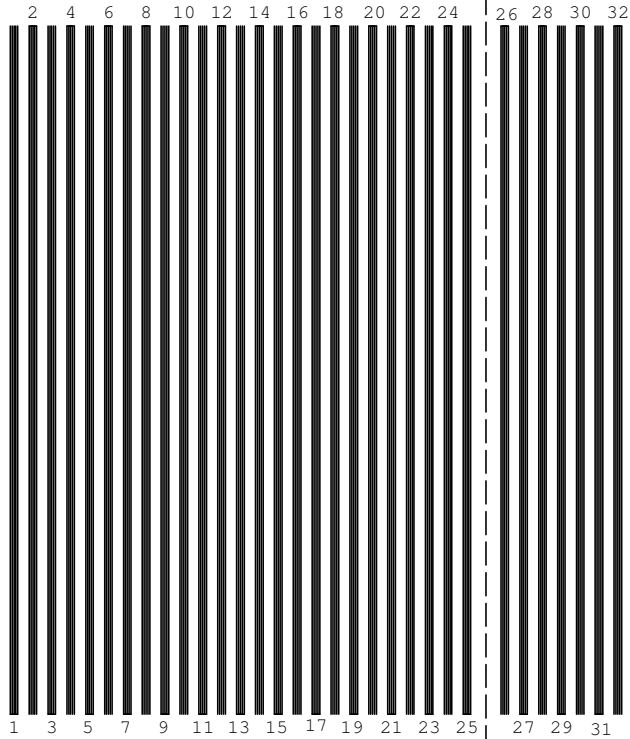
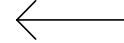
canopy

back side

front



front



			Datum	25.09.06	KBL- Solarien		MS 7900 IND_USA	MS7900_IND_05/0906us	=	Änderungen vorbehalten			
		Bearb.	R.Schmidt										
		Gepr.											
Zust.	Änderung	Datum	Name	Norm	Urspr.	Ers.f.	Ers.d.			Blatt 11 von 11Bl.			